

Digital radiography – small animals



A world of  
**digital imaging**

dedicated to animal healthcare

POWERED BY **MUSICA**

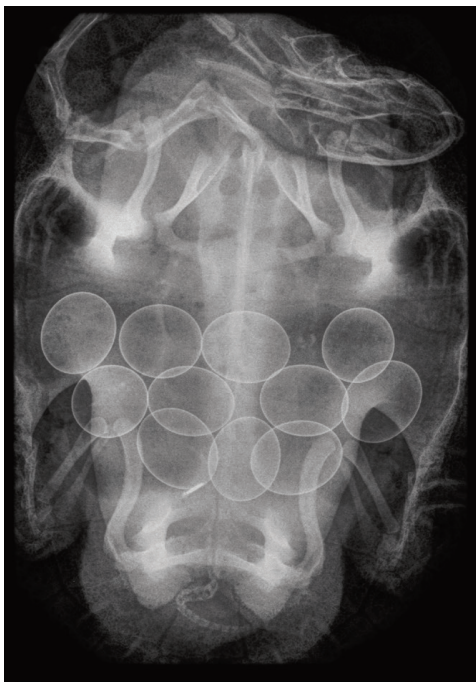
Only Available with AGFA Panels



Fast, affordable, easy-to-use solutions that offer high-quality digital imaging



**UNIVERSAL IMAGING**  
SEE THE DIFFERENCE®



# Putting our experience to work for veterinarians

With over 100 years of experience in diagnostic imaging, Agfa's has long supported human healthcare enterprises as they evolve from analog to digital. Now, you can put this knowledge to work in your veterinary practice, with our high-quality, dedicated solutions that meet the specific needs of animal care.

Whether you are looking for computed radiography (CR) or direct radiography (DR), we offer a range of proven solutions that give you excellence in imaging, plus reliable support and service from our worldwide organization.

## Why go digital with Agfa?

An Agfa digital imaging solution can offer your practice a broad range of advantages:

- Improved cost and workflow efficiency
- Ultra-fast image acquisition
- High-resolution images
- Patented MUSICA® 3 image processing
  - Superior image quality
  - Clinically validated with veterinary specialists
  - Over 65,000 installs
  - Tailored functionality & workflow
  - Third generation MUSICA 3 with 20 years of unparalleled image quality

You can see more patients, perform better diagnosis, improve pet owner satisfaction and enhance the quality of the care you provide.

## Proven quality supports vets' needs

Our dedicated solutions for vets include our patented MUSICA 3 imaging processing and our MUSICA® workstation; together they deliver you high-resolution scanning with unparalleled image quality.

MUSICA 3 is our gold-standard image processing software. It automatically analyzes the characteristics of each raw image and optimizes the processing parameters, independent of body part or dose deviation. Calibration and processing are completely automated, so there's no need for technical expertise. You get maximum detail, with minimum fuss.

The MUSICA® workstation will optimize your workflow, with very fast image acquisition and an intuitive user interface that is the same for CR and DR. With just a little training, your staff will be using it in no time!

And all our digital solutions fully support veterinary DICOM attributes, DICOM archiving and PACS (picture archiving and communication system) connectivity.

# Intelligent Radiography

POWERED BY

# MUSICA

Only Available with AGFA Panels

Agfa's patented and award winning MUSICA 3 image processing for small animals provides exquisite detail throughout the image with specialty algorithms to meet the most demanding clinical needs. MUSICA® 3 provides consistently low dose, low noise, and high-quality images for all breeds and species. MUSICA 3 is applied automatically at acquisition without any post-processing of images making MUSICA® 3 highly efficient. One look at MUSICA image quality and you'll see that the diagnosis is truly in the details.



# Direct radiography

## No-compromises image quality

With DR's fast image acquisition, you can improve your workflow and speed up your exam time without compromising on high-quality imaging. Our DR solutions for vets offer you lots of choice, including a conventional or a portable system – you decide where you want to make images.

And thanks to our range of solutions and options, DR can be within your reach, whether you are a small practice or large, working inside your clinic or out in the field.

### Upgrade with your existing equipment!

Maximize your existing investments with the DR Retrofit, which lets you upgrade your film or CR system to DR in an easy and affordable way. With a minimal investment, you get all the workflow and quality benefits of DR.

Whether you select a wireless or tethered detector, the solution is easy to install and quickly up and running. Make your choice between Cesium Iodide (CsI) or Gadolinium Oxysulphide (GOS) detectors: the superior image quality of CsI also provides the potential for significant patient dose reduction.

### Get up and running – fast!

Quick, simple installation and ease of use will get you up and running without delay. You'll enjoy all the productivity benefits of a cassette-less workflow combined with superb image quality empowered by MUSICA 3 image processing, which is included in all our digital radiography systems.

### Choosing the DR system that's right for you

We have developed a range of DR solutions to fit into each vet practice. Which one is right for you?

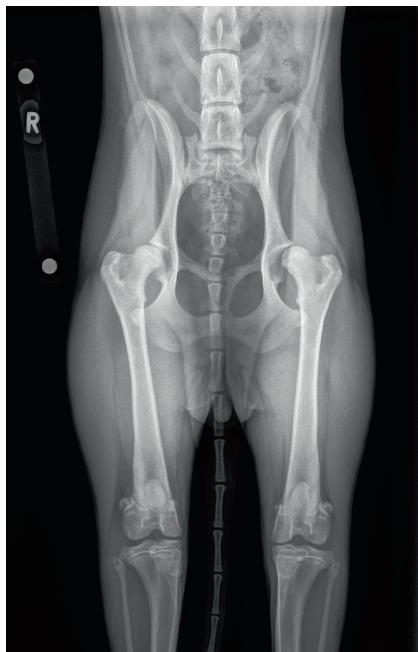
#### Veterinary solution with DX-D 60 C or G panel:

For a solution that works with your bucky, this tethered panel is an ideal and easy-to-install solution. It is also available with either a CsI or GoS scintillator.

#### Veterinary solution with DR 14e, C or G panel:

For wireless capability and superior image quality, this is the ideal solution. The detector can be used as a conventional cassette, for maximum flexibility. And after exposure, your images are transmitted wirelessly to the system for automated processing. With the Automatic Exposure Detection (AED), no electrical connection to the X-ray system is required, allowing seamless use with virtually all X-ray systems.





## The advantages of Agfa's digital imaging solutions

- Sharp images support the care of dogs and family pets of widely varying sizes.
- Offers increased user-friendliness, by eliminating film, chemicals, processor maintenance and other analog supply costs.
- Displays greater detail to let you produce more exact diagnoses.
- Adjusts contrast and brightness electronically in areas of the image that are difficult to read.
- Delivers more consistency by better compensating for incorrect exposure.
- Reduces radiation exposure to staff and patients by decreasing repeat rates, due to fewer exposure errors and processing artefacts.
- Eliminates the darkroom, film storage space and costs, and lost films.
- Offers greater environmental friendliness, with the elimination of harsh processing chemicals and the use of ultra-low power consumption technology.
- Includes Automatic Exposure Detection (AED), which allows seamless use with virtually all X-ray systems, maximizing the use of the existing X-ray equipment with 14 x 17" or 17 x 17" in Csl and GOS.



Available in Cesium or Gadox