

See The Difference™

The most trusted source in the diagnostic imaging industry.

The leader in complete diagnostic imaging solutions for over 38 years.

- » **Widest Range of Diagnostic Imaging Solutions:** We offer complete diagnostic imaging solutions from many manufacturers, which allows us to meet the specific needs of all veterinarians and equine practitioners.
- » **In - House Customer Service:** To be sure our service and support exceeds your expectations, our highly trained staff of customer support specialists is just a phone call away in our Bedford, NY location.
- » **In - House Technical Support:** Our highly trained technical support staff is here to help. We can assist you with any technical questions you may have, over the phone or through remote access.
- » **In - House Repairs and Warranty:** If the unforeseen happens and your equipment is in need of repair, we have you covered. We are certified repair specialists for all equipment we carry.
- » **Training and Support:** Our highly trained product specialists will train you and your staff, so you will be confident with your new equipment and integrate it into your practice immediately.
- » **Continued Education:** Since 1988 we have been dedicated to fulfilling your education needs. We offer AAVSB RACE approved courses taught by leading veterinarians.

Our Goals

- » To be dedicated to the success of our customers by providing the latest imaging technologies, training and service that are unequalled in the industry.
- » To offer sophisticated imaging equipment at affordable prices, enabling veterinarians of all practice sizes to provide superior diagnostic imaging to their patients.



UNIVERSAL IMAGING
SEE THE DIFFERENCE™



S2

Smart Color System,
Discovering Your Outstanding Value



Universal Imaging - A Division of UMS Solutions, Inc.
299 Adams Street
Bedford Hills, NY 10507

Phone: 800.842.0607 / 914.666.6200 Fax: 914.666.2454

E-Mail: sales@universalimaginginc.com

www.universalimaginginc.com



CE 0434



S2

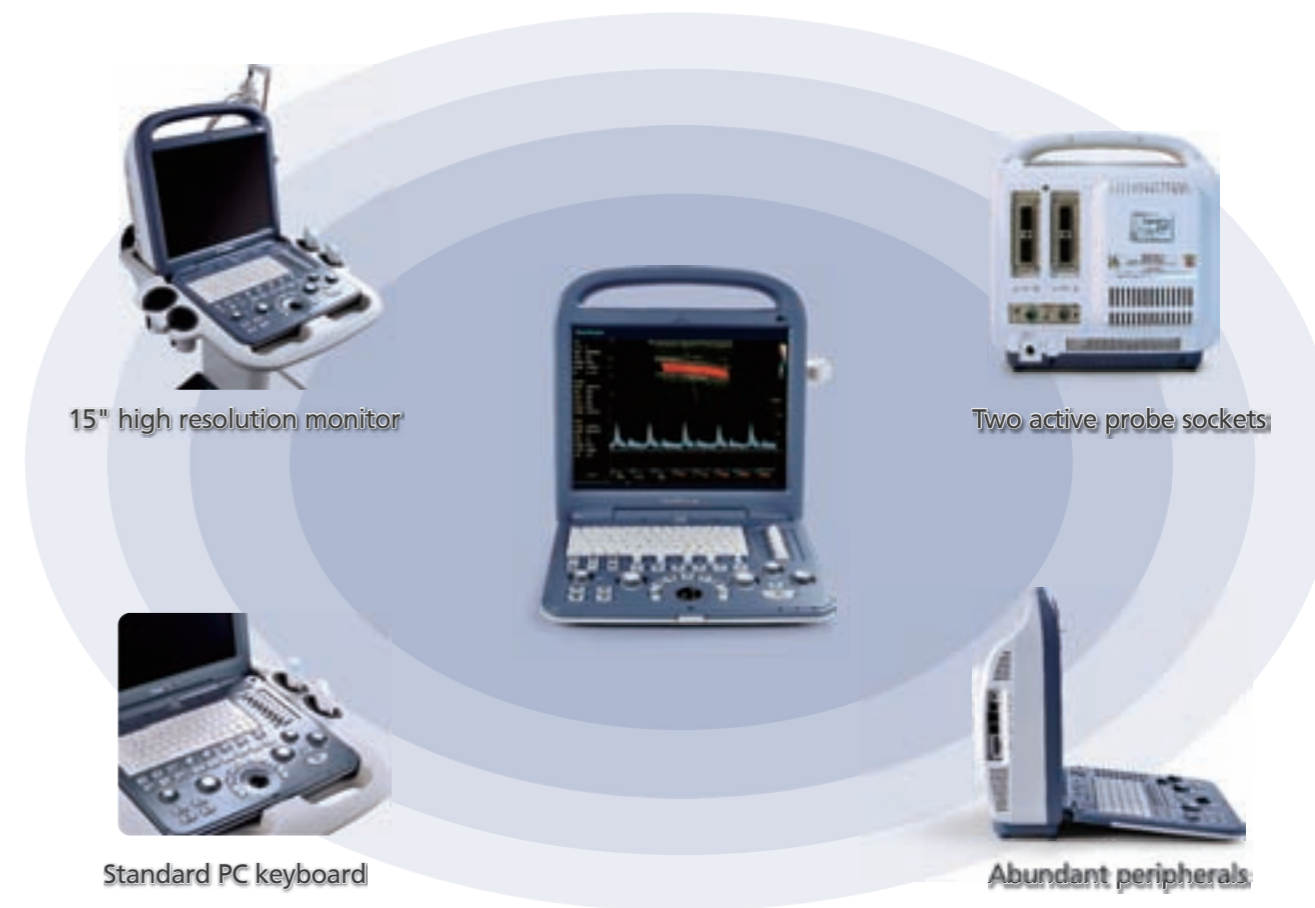
Smart Color System,
Discovering Your
Outstanding Value

The new SonoScape portable color system S2, with practical design and stable performance, will go beyond your expectation but not your budget.

S2 is catered to the needs of veterinarians: intelligent patient file management system, convenient user-definable settings, professional diagnosis applications. Working with S2, you can have comfort, accuracy and confidence.

Ergonomic Design

Portable design, be ready at anytime and anywhere.



Comprehensive Functions

Complete working modes, outstanding 2D performance, sensitive blood flow imaging, 4D image technology, endows S2 with the best package of functions in its class.

Complete Working Modes

- B Mode, Dual B, 4B
- M Mode, Color M, Steer M,
- Color Mode, DPI Mode
- PW Mode, CW Mode (optional)

Advanced Imaging Technology

- THI
- μ -Scan Speckle Reduction (optional)
- Compound Imaging (optional)
- Panoramic Imaging (optional)
- Trapezoid Imaging (optional)
- 4D imaging (optional)

Broad Range of Clinical Application

- General Practice: Small animal, Large Animal, Abdominal, Reproductive, Musculoskeletal, Vascular, Small Parts
- Post-measurement and calculations software packages
- Professional report for different exams

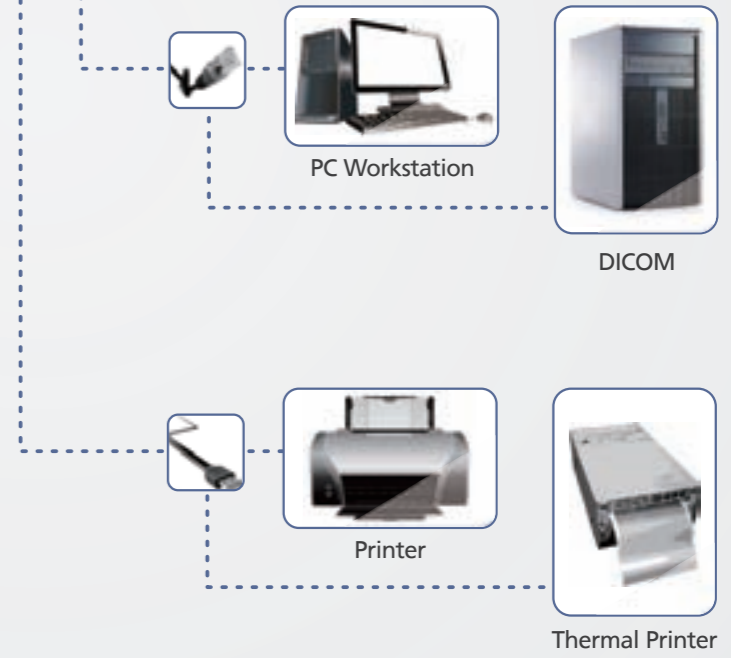
Optimum Workflow

Upgraded workflow, smart data management, a more user-friendly and productive Color Doppler system.

- **Intuitive user interface:** Clear system layout designed for convenient workflow, Menu-driven interface;
- **Define your own work-style:** Fully customized work settings for data table/graph, function keys, icons, formulas, measurement, report layout...totally based on your own work style and habit;
- **Clip-board function:** Easy image review during scanning;
- **Smart patient data management:** Easy access to patient image and data storage, retrieve, review and report;
- **Value-added DICOM functions:** Save, Storage Commitment, MPPS, Print, Worklist; providing more advanced file management solutions;

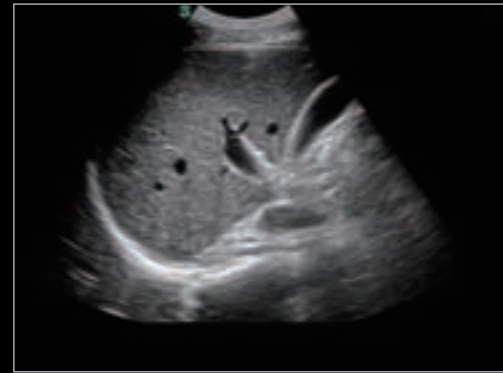


- **Various data solutions:** built-in 160G hard drive, DICOM 3.0 LAN port, VGA port, support Flash disk, External hard drive, external CD drive, video printer, USB laser/jet printer and so on;
- **M-tuning:** Intelligent one key image optimization.



Connecting

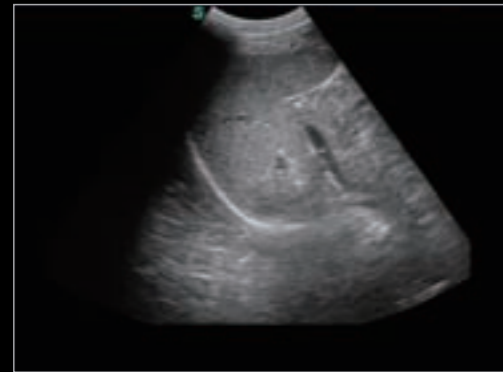
Superior Imaging Quality



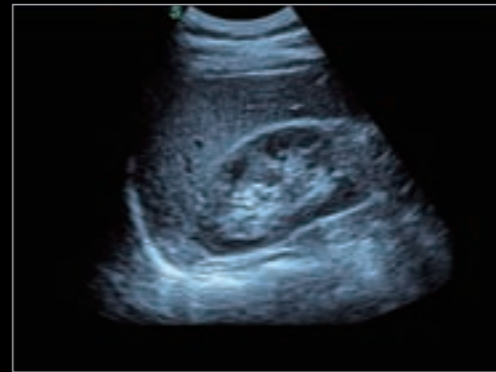
Gallbladder



Hepatic Blood Flow



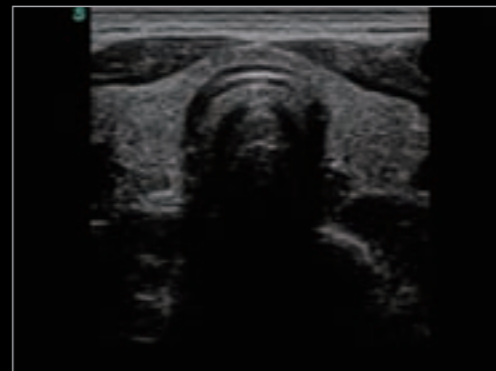
Spleen



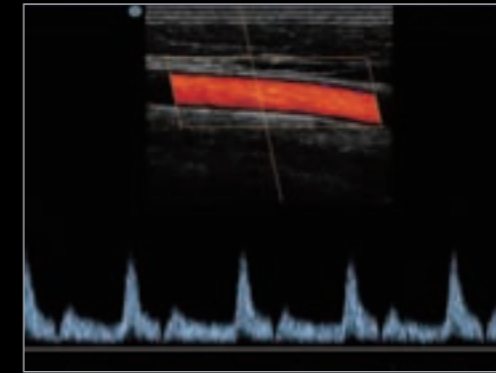
Liver and Kidney



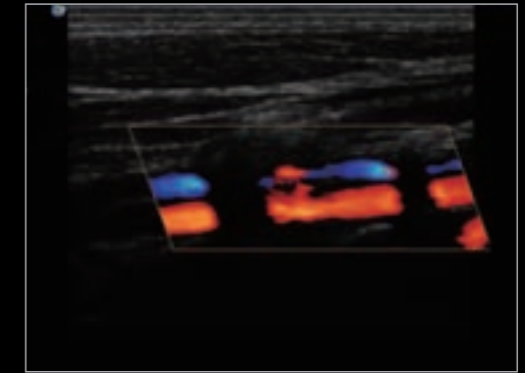
Renal Blood Flow



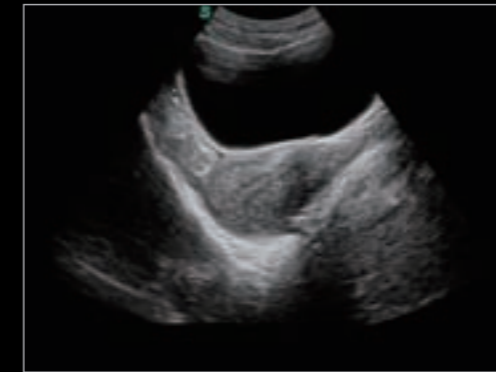
Thyroid



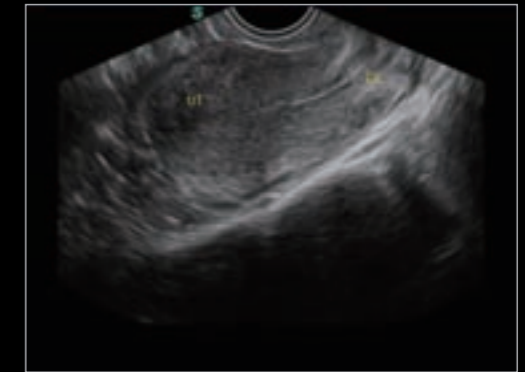
Spectral of Carotid Blood Flow



Vertebral Artery



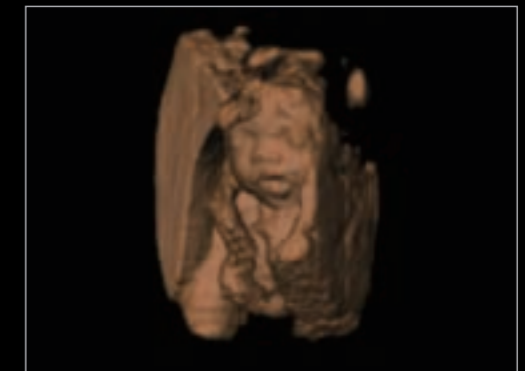
Uterus



Uterus



Fetus



4D